

By Laura Perry, Sammy Reynolds and Andrew Plummer

Laura's work

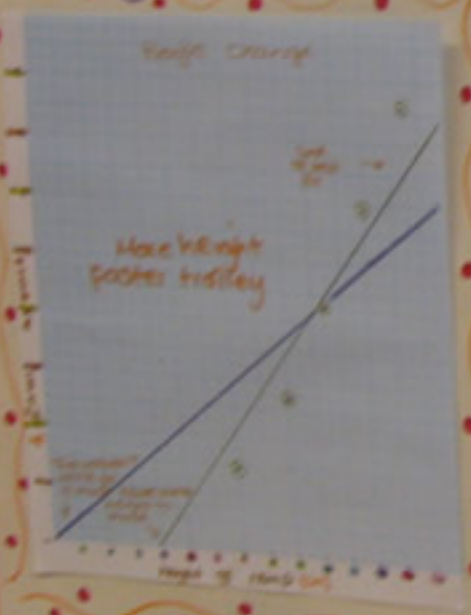
### ! Height Change!

As the ramp got higher the trolley went down it faster therefore the steeper the ramp the faster the trolley went. By making the ramp longer I think the results would be more different.

#### Diagram



### Graph

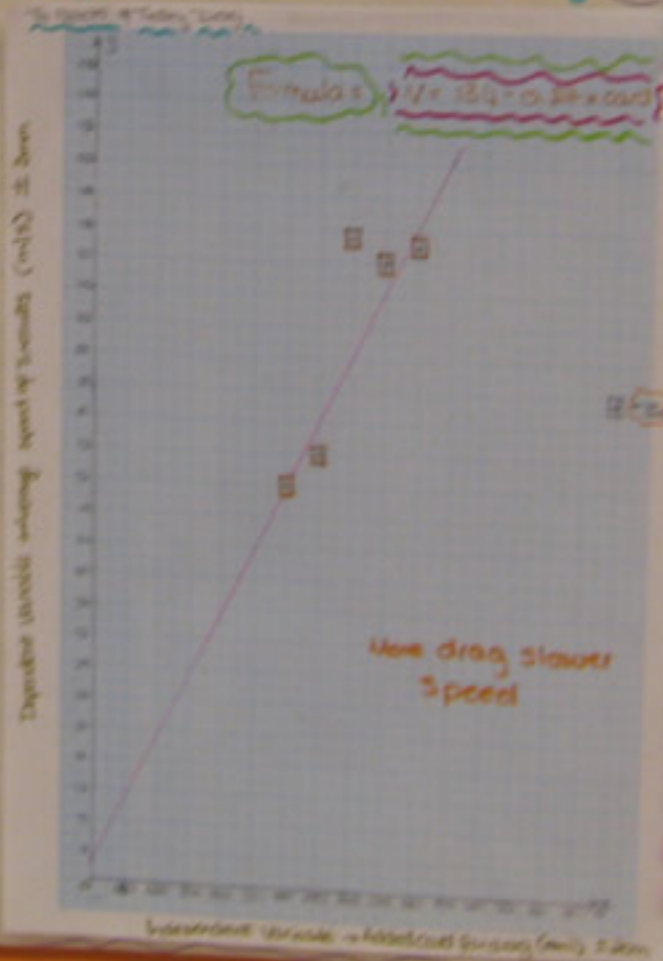


# TROLLEY TRAVEL

We have investigated different factors that affect the speed of a trolley. Here are our results...

Sammy's work

### Graph

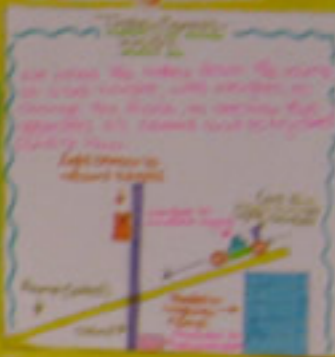


Andrew's work

### ! Weight Change!

As the weight was increased there was no obvious speed change. By having a longer ramp and a place where the weight can be added in the same place each time, as the back got to full of weights so we had to start putting them on the front, I think this would make the results slightly different.

#### Diagram



### ! Drag change!

There were no obvious results for this experiment. I think to make the results more obvious, we would need a much bigger piece of card.